

CZECH TELEVISION
Public Service Broadcaster

- 1953** first television broadcasting trial from Studio Prague started on May 1
- 1970** second channel **ČT 2** was launched
- 1973** colour broadcasting on the second channel **ČT 2**
- 1975** colour broadcasting on the first channel **ČT 1**
- 1992** **Czech Television was established based on the Czech Television Act**
- 2005** news channel **ČT 24** and **DVB-T** was launched
- 2006** channel **ČT sport** was launched
- 2010** **HDTV** was launched
- 2011 analogue switch-off
- 2013** new thematic channels **ČT :D** and **ČT art** were launched
- 2013** HD broadcasting in DVB-T: **ČT 1 HD, ČT 2 HD, ČT sport HD**

Česká televize - main facts

- organizational units and studios in **Prague, Brno** and **Ostrava**
- almost 3,000 **employees**
- budget **247.000.000 EUR**
- AD share 15+ **29,84 %**
- **76,6%** of own production
- television licence fee **5 EUR/month/household**
- revenues from business operations – **9 %** of total budget
- broadcasts via **DVB-T (HbbTV), DVB-S, IPTV** and **internet**
- member in **EBU, Euronews, FIAT/IFTA, Circom, PBI, EDN, IMZ, Prix Italia**

Česká televize - TV channels

 1

ČT 1 (HD) is a family-oriented channel showing original Czech movies, series, entertainment and lifestyle.

 2

ČT 2 (HD) broadcasts documentaries, nature-oriented shows and foreign films and series.

 24

ČT 24 is a 24-hour news channel offering hot news and extended economic, regional and cultural news.

 sport

ČT sport (HD) broadcasts world, European and Czech sports events.

 :D

ČT :D is a children's educational channel, **launched 31.8.2013**. Broadcasts from 6am until 8pm.

 art

ČT art is a channel focusing on culture, theater, operas, music, art films, **launched 31. 8. 2013**. Broadcasts from 8pm until late night.

Statutory body

Director General - appointed by the Czech Television Council for a six-year term

Current Director General

Petr Dvořák

Supervisory body

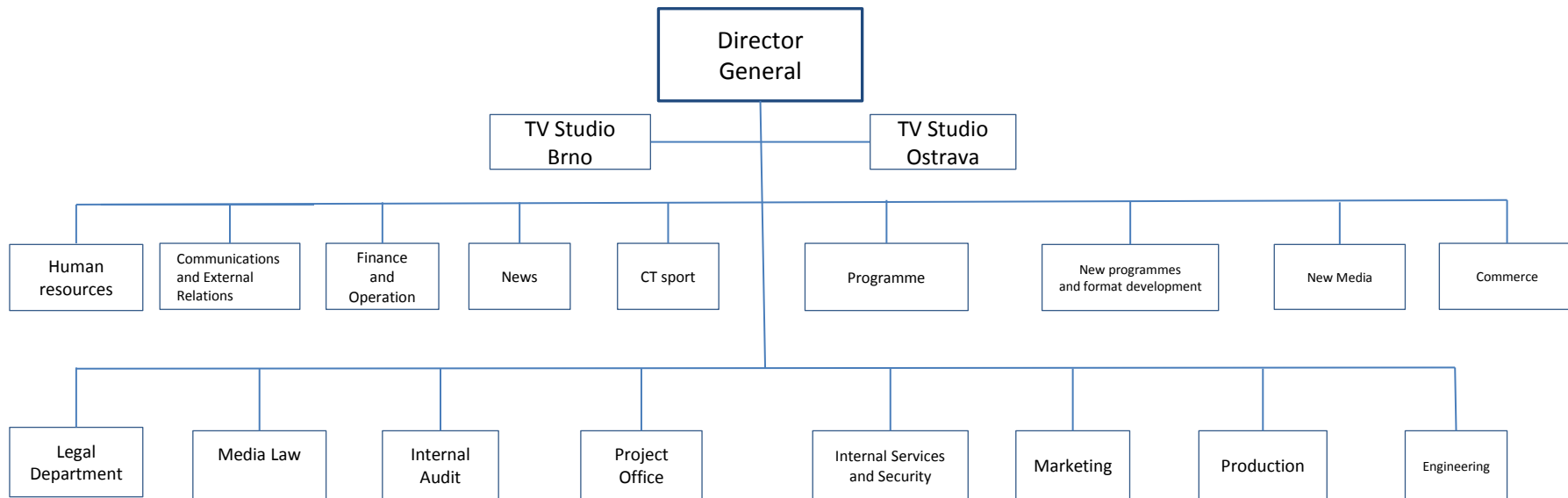
The Czech Television Council is a body through which the public exercises its right to control the activities of Czech Television

The Council consists of 15 members elected and repealed by the Chamber of Deputies. The members are chosen in a way to represent major regional, political, social and cultural opinions and ideas. The Council members are elected for a period of six years.

How does The Council work?

The Czech Television Council meets in public sessions twice a month.

Česká televize - Organization Chart



TV market in the Czech Republic is dominated by three groups. In 2015, the public broadcaster Czech Television (CT) achieved the highest market share at 29,8%. It was followed by Central Media Enterprise (CME) with 27,1% market share and Modern Times Group (MTG) with 17,1%.

In the Czech Republic, a large number of Channels targeting other countries are licensed. From 2008 to 2012, their number increased from 4 to 82. Important pan-European broadcasters are based in the country, including MTV Networks Europe. Chello Central Europe and HBO.

In 2014, CS Film Company added the new channel Kino Svet. The launch of four more commercial channels is expected in 2015.

CT Correspondents abroad:

- Germany
- Slovakia
- Belgium
- Israel
- Russia
- France
- China
- Poland
- Washington



Major events organised by International Relations Department.:

- EBU General Assembly June 2015
- EBU Financial Assembly September 2015
- EBU Technical Assembly June 2014
- EBU Voice of PSM November 2015

Other projects and events

- Golden Prague Festival
- Participating in the EBU Peer-To-Peer Review
- Memorandum of Cooperation with ARTE TV, ARD/MDR, RTVS, CCTV

Membership in international organisations

EBU European Broadcasting Union

PBI Public Broadcasting International

Circom European Association of Regional Television

FIAT/IFTA International Federation of TV Archives

BFA Broadcasting Fee Association

IMZ International Music and Media Centre

EDN European Documentary Network

PRIX ITALIA

EURONEWS, Eurosport



Thank you for your attention.

International Relations Department

internationalrelations@ceskatelevize.cz

www.ceskatelevize.cz/en